

# UML Class and Object Diagrams

<http://www.uml-diagrams.org/class-diagrams-overview.html>

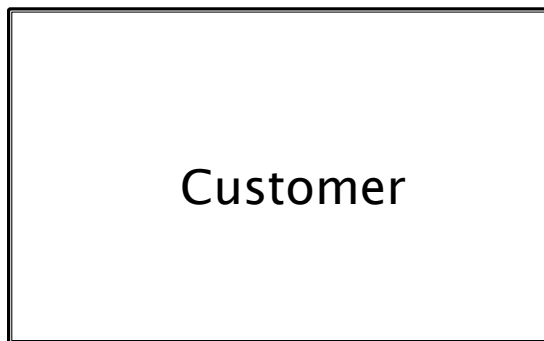
# Definitions

- ▶ Class diagram is UML structure diagram which shows structure of the designed system at the level of classes and interfaces, shows their features, constraints and relationships – associations, generalizations, dependencies, etc.
- ▶ Object diagram could be considered as instance level class diagram which shows instance specifications of classes and interfaces (objects), slots with value specifications, and links (instances of association).



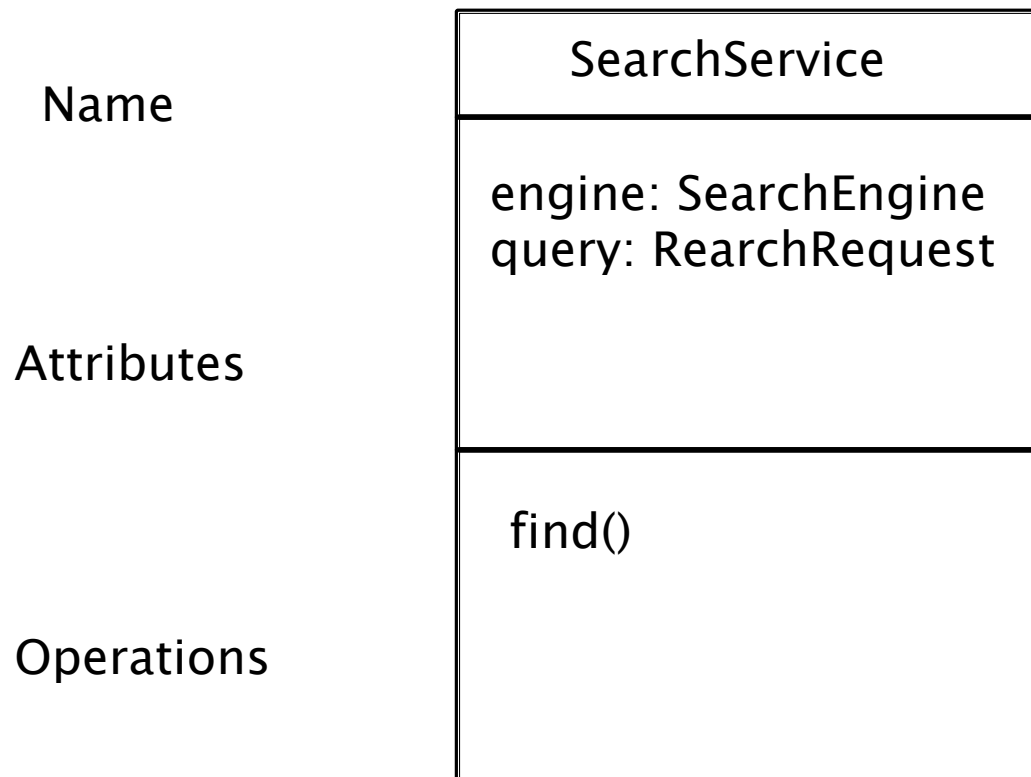
# Class

- ▶ A class is a classifier which describes a set of objects that share the same
- ▶ features
- ▶ constraints
- ▶ semantics (meaning).



# Features of a class

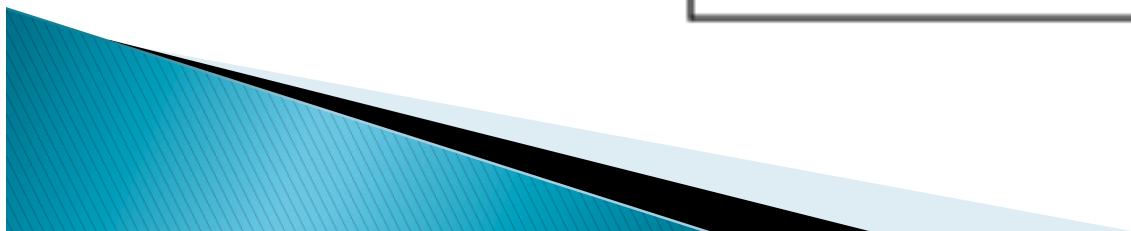
- ▶ Features of a class are **attributes** and **operations**.



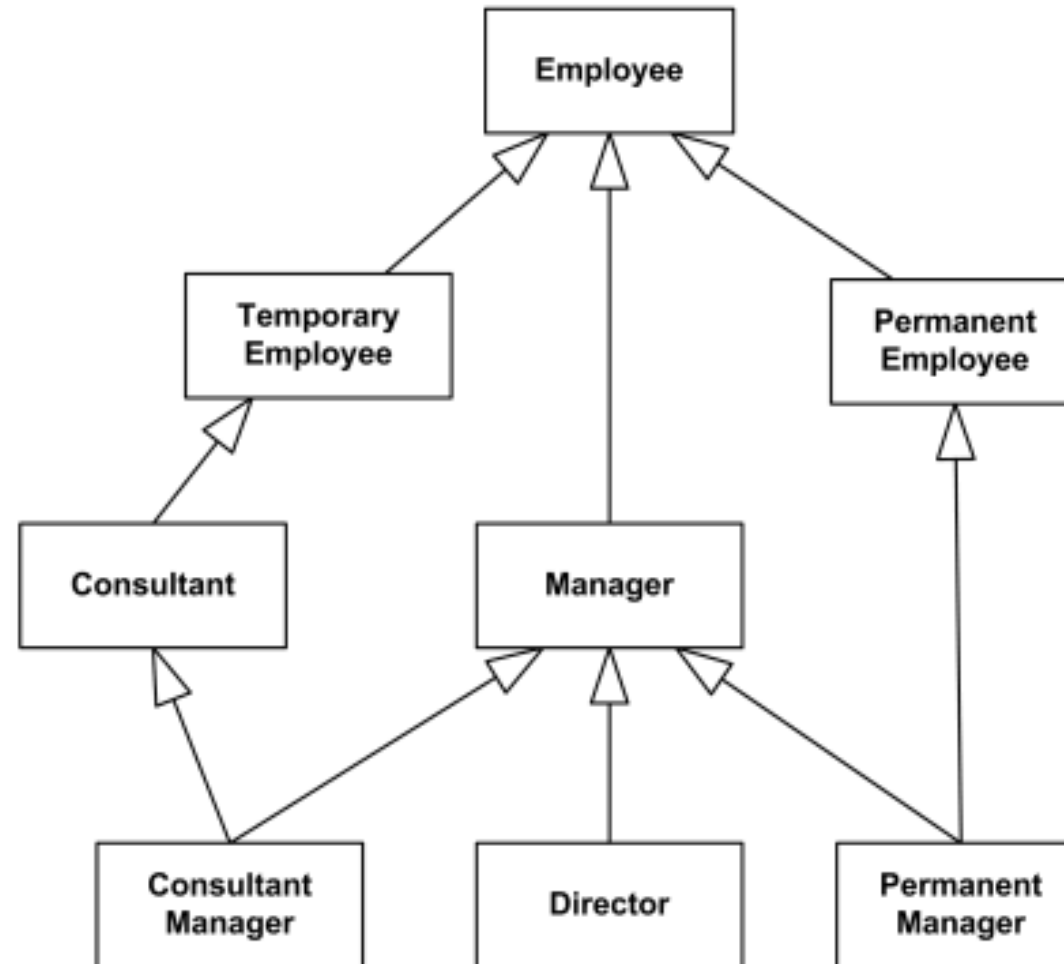
# Features of a class

- ▶ +, #, - are used to specify visibility
  - Always list members in order from public to private in each of the sections of the class
- ▶ Static members are underlined

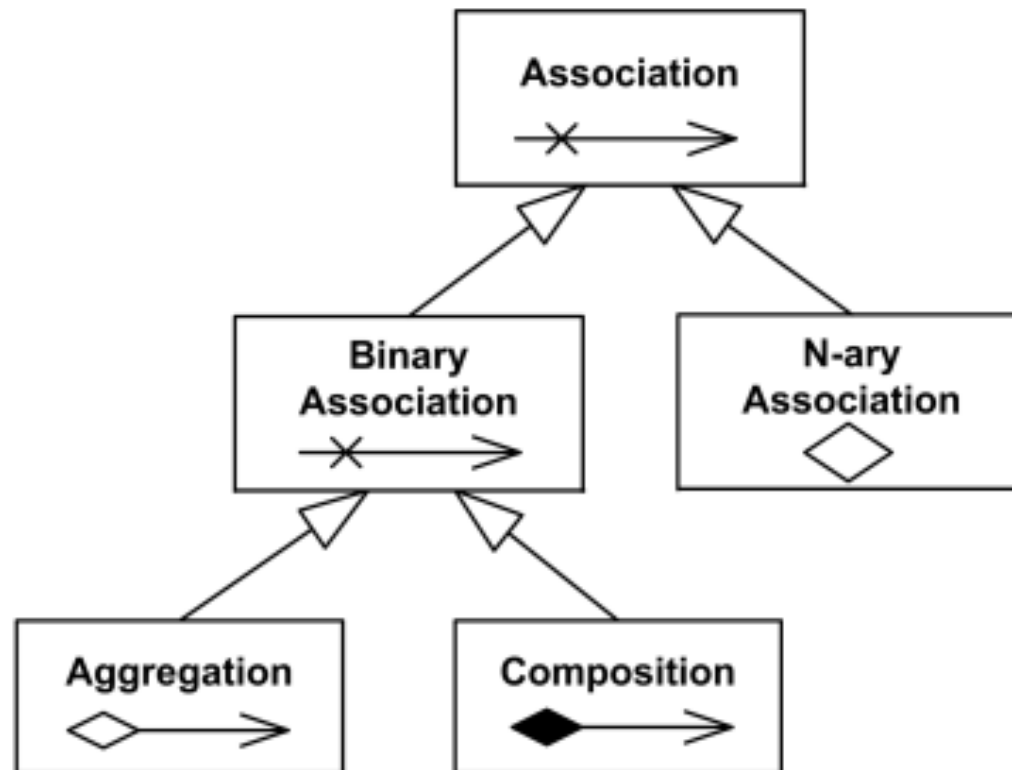
SearchService
- config: Configuration - engine: SearchEngine
+ search( query: SearchRequest): SearchResult - <u>createEngine()</u> : SearchEngine



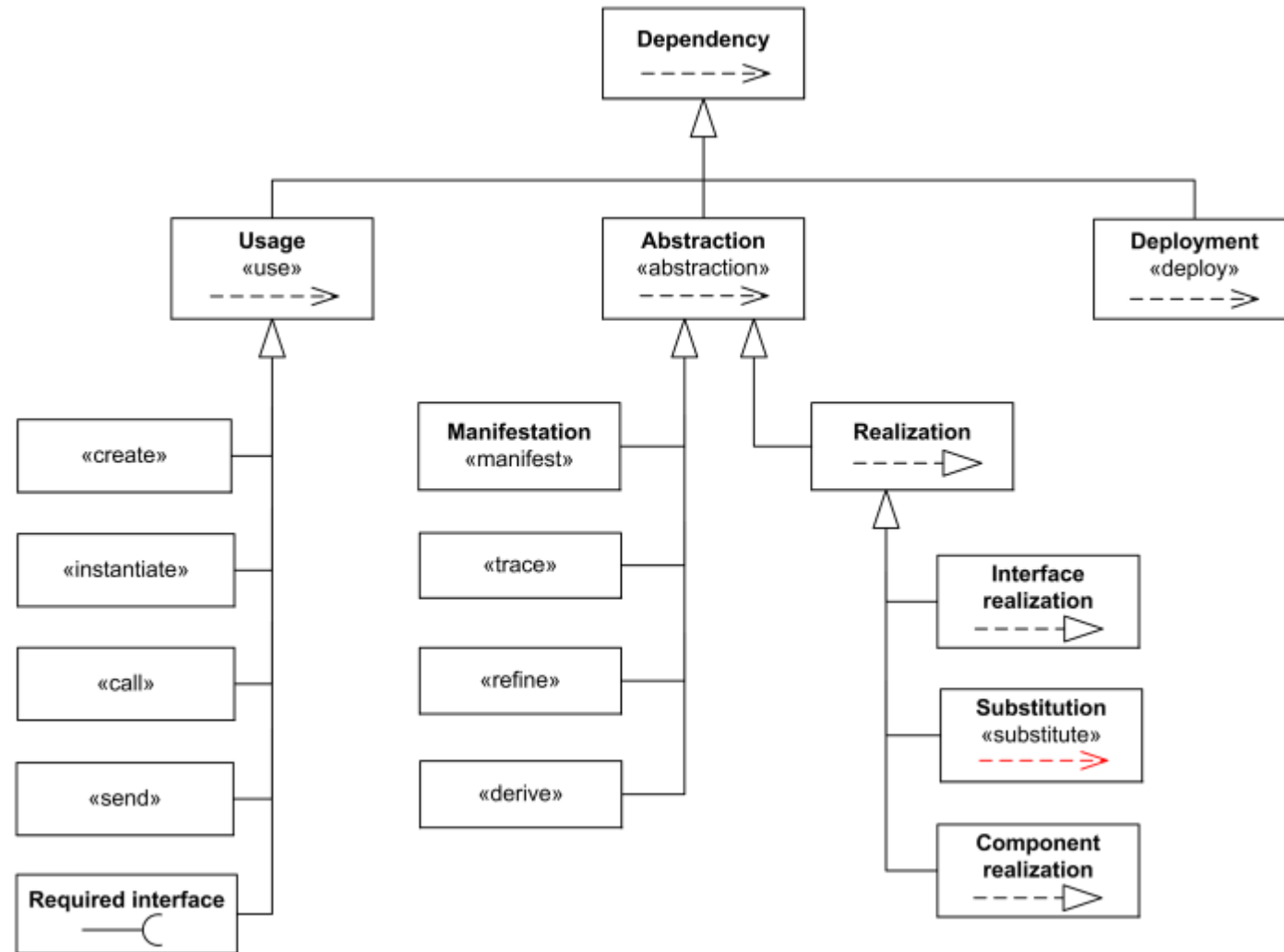
# Generalisation



# Association



# Dependency

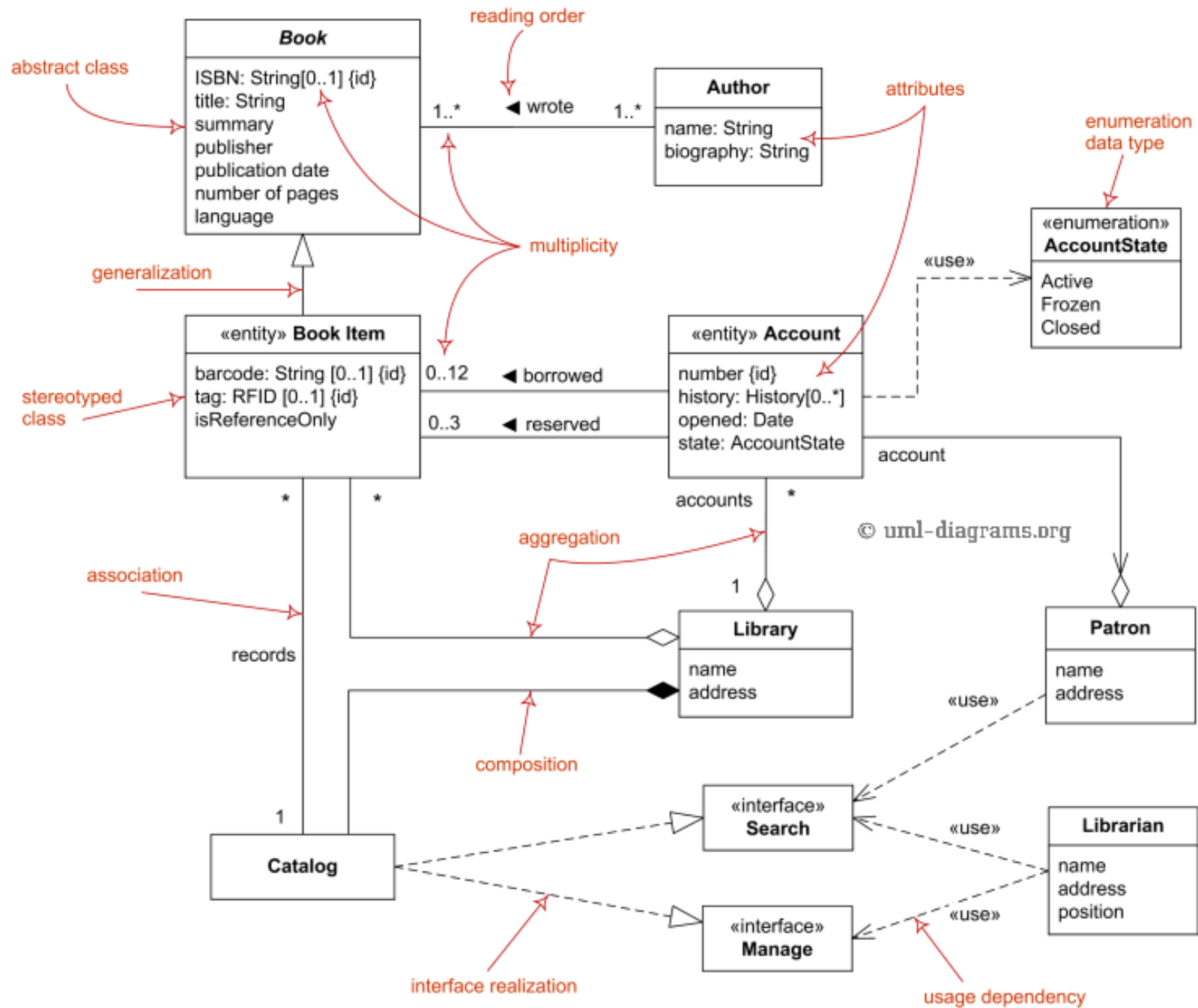




# Multiplicity

- ▶ If the multiplicity is associated with an element the multiplicity range is placed within square brackets as part of the text string specifying the element.
- ▶ If the multiplicity is related to generalisation, association or dependency the multiplicity range is written on the connection line without other punctuation

<b>Multiplicity</b>	<b>Option</b>	<b>Cardinality</b>
<b>0..0</b>	<b>0</b>	Collection must be empty
<b>0..1</b>		No instances or one instance
<b>1..1</b>	<b>1</b>	Exactly one instance
<b>0..*</b>	<b>*</b>	Zero or more instances
<b>1..*</b>		At least one instance
<b>5..5</b>	<b>5</b>	Exactly 5 instances
<b>m..n</b>		At least m but no more than n instances



# Objects and their slots

- ▶ Anonymous instance of a Customer class

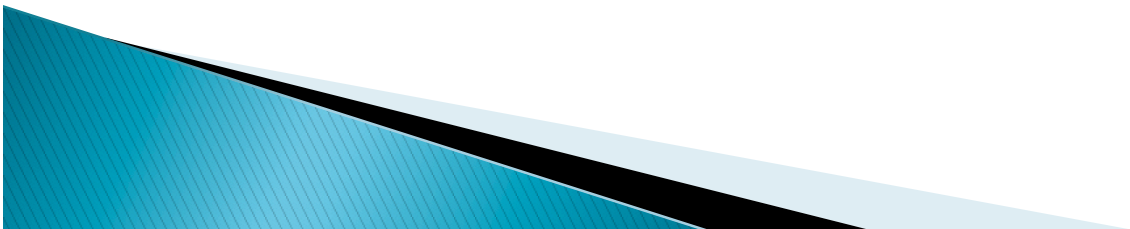
:Customer

- ▶ Instance of an unknown/unsnerified class

newPatient:

- ▶ Instance that has slots with values specified

<u>newPatient: Patient</u>
id: String = "38-545-137" name = John Doe gender: Gender = male



# Objects and their links

- ▶ Link **Wrote** between instance **p** of **Professor** playing **author** role and instance **b** of **Book** in the **textbook** role.

